

# HINGES



**Dorsey Style  
3-Hole Hinge**

**Fleet Engineers part no.:**  
**022-00391**  
**hinge pin:** 997-98022  
**cross reference:**  
Dorsey 4101482



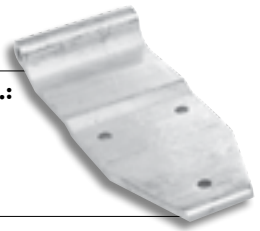
**Fruehauf Style  
5-Hole Hinge**

**Fleet Engineers part no.:**  
**022-01004**  
**hinge pin:** 997-98017  
**cross reference:**  
Fruehauf BCF004678001, DBA00158300



**Great Dane Style  
3-Hole Hinge**

**Fleet Engineers part no.:**  
**022-01058**  
**hinge pin:** 997-98015  
**cross reference:**  
Great Dane 47563



**Dorsey Style  
3-Hole Hinge**

**Fleet Engineers part no.:**  
**022-00392**  
**hinge pin:** 997-98022  
**cross reference:**  
Dorsey 4101481



**Fruehauf Style  
4-Hole Hinge  
(Radius Offset)**

**Fleet Engineers part no.:**  
**023-00557**  
**hinge pin:** 997-98017  
**cross reference:**  
Fruehauf DCE-8681-1



**Great Dane Style  
3-Hole Hinge**

**Fleet Engineers part no.:**  
**022-01412**  
**hinge pin:** 997-98027  
**cross reference:**  
Great Dane 43000124



**Dorsey Style  
3-Hole Hinge**

**Fleet Engineers part no.:**  
**022-00393**  
**hinge pin:** 997-98022  
**cross reference:**  
Dorsey 5609022



**Fruehauf Style  
4-Hole Hinge  
(Straight Offset)**

**Fleet Engineers part no.:**  
**023-00567**  
**hinge pin:** 997-98017  
**cross reference:**  
Fruehauf DCF-3980-1



**Great Dane Style  
3-Hole Hinge  
(Reefer)**

**Fleet Engineers part no.:**  
**023-00562**  
**hinge pin:** 997-98015  
**cross reference:**  
Great Dane 08206



**Dorsey Style  
4-Hole Hinge**

**Fleet Engineers part no.:**  
**022-00888**  
**hinge butt:** 023-00662  
**hinge pin:** 997-98022  
**cross reference:**  
Dorsey 2810093



**Gindy Style  
3-Hole Hinge**

**Fleet Engineers part no.:**  
**022-00039**  
**cross reference:**  
Gindy H04-B01073



**Great Dane Style  
3-Hole Hinge  
(Dry Freight)**

**Fleet Engineers part no.:**  
**023-00563**  
**hinge pin:** 997-98015  
**cross reference:**  
Great Dane 08138



**Dorsey Style  
3-Hole Hinge**

**Fleet Engineers part no.:**  
**022-00889**  
**hinge butt:** 023-00662  
**hinge pin:** 997-98022  
**cross reference:**  
Dorsey 2810919



**Great Dane Style  
3-Hole Hinge**

**Fleet Engineers part no.:**  
**022-00407**  
**hinge pin:** 997-98027  
**cross reference:**  
Great Dane 31801018



**Great Dane Style  
3-Hole Hinge**

**Fleet Engineers part no.:**  
**023-01656**  
**hinge pin:** 997-98015  
**cross reference:**  
Great Dane 42500813



**Fruehauf Style  
3-Hole Hinge**

**Fleet Engineers part no.:**  
**022-00007**  
**cross reference:**  
Fruehauf DCA-02-42



**Great Dane Style  
3-Hole Hinge**

**Fleet Engineers part no.:**  
**022-01007**  
**hinge pin:** 997-98015  
**cross reference:**  
Great Dane 15152



**Hyundai Style  
3-Hole Hinge**

**Fleet Engineers part no.:**  
**023-01657**  
**cross reference:**  
Hyundai TRR7000C-AH, 20003977



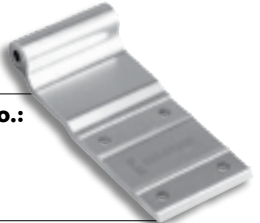
**Fruehauf Style  
2-Hole Hinge**

**Fleet Engineers part no.:**  
**022-00013**  
**cross reference:**  
Fruehauf DXA-0687



**Great Dane Style  
4-Hole Hinge**

**Fleet Engineers part no.:**  
**022-01009**  
**cross reference:**  
Great Dane 31800904



**Kentucky Style  
3-Hole Hinge**

**Fleet Engineers part no.:**  
**022-00614**  
**hinge butt:** 023-00645  
**hinge pin:** 997-98017  
**cross reference:**  
Kentucky 2906, A1-5984-50



**Kentucky Style  
Hinge Assembly  
(Side Door)**

**Fleet Engineers part no.:**  
**022-01035**  
**cross reference:**  
Kentucky 6616396000



**3-Hole Hinge  
(with Zerk)**

**Fleet Engineers part no.:**  
**023-01502**  
**hinge pin:** 997-98017  
**cross reference:**  
Miner H-1081-3Z



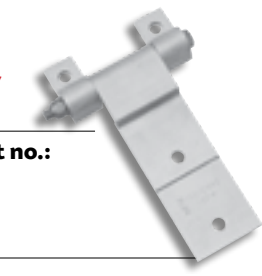
**Stoughton Style  
4-Hole Hinge**

**Fleet Engineers part no.:**  
**022-01008**  
**hinge pin:** 997-98017, 021-00376  
**cross reference:**  
Stoughton 04-08316



**Kentucky Style  
Hinge Assembly  
(Belly Box)**

**Fleet Engineers part no.:**  
**022-01040**  
**cross reference:**  
Kentucky 6616600000



**5-Hole Hinge**

**Fleet Engineers part no.:**  
**023-02009**  
**hinge pin:** 997-98017  
**cross reference:**  
Miner P108835, P108845, P108855



**Stoughton Style  
3-Hole Hinge**

**Fleet Engineers part no.:**  
**022-01081**  
**cross reference:**  
Stoughton 04-86386-001-00,  
Miner H-1086



**Manac Style  
3-Hole Hinge**

**Fleet Engineers part no.:**  
**022-01041**  
**cross reference:**  
Manac V3K00002



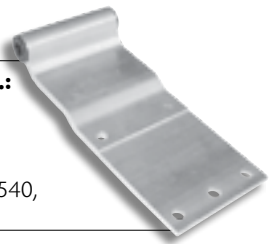
**Monon Style  
3-Hole Hinge**

**Fleet Engineers part no.:**  
**022-00996**  
**cross reference:**  
Monon PC1310



**Stoughton Style  
5-Hole Hinge**

**Fleet Engineers part no.:**  
**022-01086**  
**hinge pin:** 997-98015  
**cross reference:**  
Stoughton P108530, P108540,  
H-1085



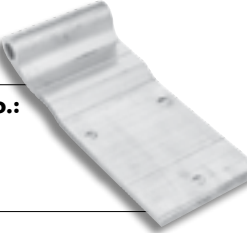
**Manac Style Hinge  
(No Holes)**

**Fleet Engineers part no.:**  
**022-01043**  
**cross reference:**  
Manac 353-239



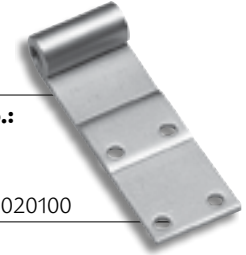
**Monon Style  
3-Hole Hinge**

**Fleet Engineers part no.:**  
**022-01185**  
**cross reference:**  
Monon ED045011



**Strick Style  
4-Hole Hinge**

**Fleet Engineers part no.:**  
**021-00010**  
**cross reference:**  
Strick 6A-23557, AA35F00020100



**Miller Style  
3-Hole Hinge**

**Fleet Engineers part no.:**  
**022-00030**  
**cross reference:**  
Miller B17-0116C



**Morgan Style  
3-Hole Hinge  
(Rear Door)**

**Fleet Engineers part no.:**  
**022-01046**  
**cross reference:**  
Morgan 004161



**Strick Style  
3-Hole Hinge (Offset)**

**Fleet Engineers part no.:**  
**021-00025**  
**cross reference:**  
Strick AA35F00040100



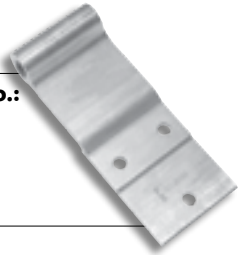
**5-Hole Hinge**

**Fleet Engineers part no.:**  
**023-00559**  
**hinge butt:** 023-00664  
**hinge pin:** 997-98017  
**cross reference:**  
Miner H-1060-3, H-1060-4



**Morgan Style  
3-Hole Hinge  
(Side Door)**

**Fleet Engineers part no.:**  
**022-01052**  
**022-01051**  
**cross reference:**  
Morgan 004141



**Strick Style 3-Hole Hinge  
(w/Stamped  
Reinforcing Rib)**

**Fleet Engineers part no.:**  
**022-00490**  
**hinge butt:** 023-00642  
**cross reference:**  
Strick AA33C01060100



**3-Hole Hinge**

**Fleet Engineers part no.:**  
**023-00561**  
**hinge butt:** 023-00664  
**hinge pin:** 997-98017  
**cross reference:**  
Miner H-1081-3



**Pines Style  
3-Hole Hinge**

**Fleet Engineers part no.:**  
**022-00995**  
**cross reference:**  
Pines AE54111, REB-0395



**Strick Style  
3-Hole Hinge**

**Fleet Engineers part no.:**  
**022-01003**  
**cross reference:**  
Strick AA35F00100100



**USE THIS RULER TO DETERMINE THE CORRECT HINGE LENGTH.**



**Strick Style  
4-Hole Hinge**

**Fleet Engineers part no.:**  
**022-01013**

**cross reference:**  
Strick AA35F00230100



**Utility Style  
3-Hole Hinge**

**Fleet Engineers part no.:**  
**023-00943**

**hinge pin:** 997-98019  
**cross reference:**  
Utility 1-4950-004



**Trailmobile Style  
3-Hole Hinge**

**Fleet Engineers part no.:**  
**022-00966**

**hinge butt:** 023-00678  
**hinge pin:** 997-98016  
**cross reference:**  
Trailmobile 515-10-65



**Vanco Style  
4-Hole Hinge**

**Fleet Engineers part no.:**  
**022-01055**

**hinge pin:** 997-98017,  
021-00376  
**cross reference:**  
Vanco 20038



**Trailmobile Style  
4-Hole Hinge**

**Fleet Engineers part no.:**  
**022-01036**

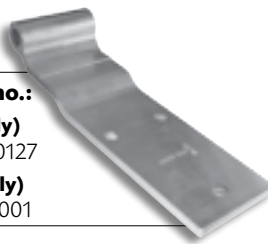
**hinge pin:** 997-98016  
**cross reference:**  
Trailmobile 515-10-78-1



**Vanguard Style  
3-Hole Hinge**

**Fleet Engineers part no.:**  
**022-01407 (hinge only)**

**cross reference:** RFP00127  
**022-01404 (insert only)**  
**cross reference:** BSH0001



**Trailmobile Style  
3-Hole Hinge**

**Fleet Engineers part no.:**  
**023-00008**

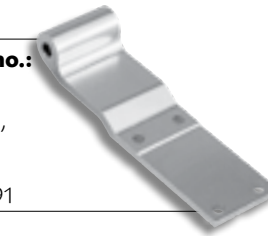
**cross reference:**  
Trailmobile 515-10-61A, P 6016



**Wabash Style  
4-Hole Hinge**

**Fleet Engineers part no.:**  
**022-00975**

**hinge butt:** 023-00669,  
021-00308  
**cross reference:**  
WAB06300291, 21100291



**Trailmobile Style  
3-Hole Hinge  
(Square End)**

**Fleet Engineers part no.:**  
**023-00940**

**hinge butt:** 023-00678  
**hinge pin:** 997-98016  
**cross reference:**  
Trailmobile 515-10-73A



**Wabash Style  
4-Hole Hinge  
(Reefer)**

**Fleet Engineers part no.:**  
**022-01047**

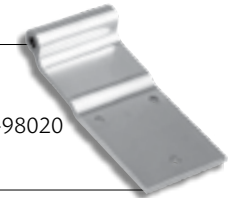
**hinge butt:** 023-00669,  
021-00308  
**cross reference:**  
Wabash 21101272, WAB06301272



**Utility Style  
3-Hole Hinge**

**Fleet Engineers part no.:**  
**022-01056**

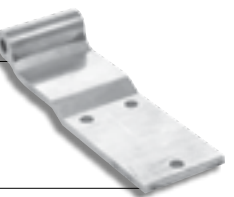
**hinge pin:** 997-98017, 997-98020  
**cross reference:**  
Utility 3410019



**Utility Style  
3-Hole Hinge**

**Fleet Engineers part no.:**  
**022-01184**

**cross reference:**  
Utility 3-4100-0022



**Wabash Style  
4-Hole Hinge**

**Fleet Engineers part no.:**  
**022-01182**

**hinge butt:** 023-00669, 021-00308  
**cross reference:**  
Wabash WAB06302245,  
WN06301527, Miner P1089



**WE'VE GOT IT ALL –  
Don't Forget The  
Hinge Pins!**



**Dorsey Style  
997-98022**

**Fruehauf &  
Miner Style  
997-98017**

**Great Dane Style  
997-98015**

**Great Dane Style  
997-98027**

**Trailmobile Style  
997-98016**

**Utility Style  
997-98019**

**One-Piece Weld-On Hinge Butts**

See the current Fleet Engineers catalog or visit [www.fleetengineers.com](http://www.fleetengineers.com) for part numbers, specifications and cross reference information.



**FLEET ENGINEERS**

Driving Forward™

To order or for additional information:

Call: 800-333-7890

8:00 a.m. - 5:00 p.m. EST

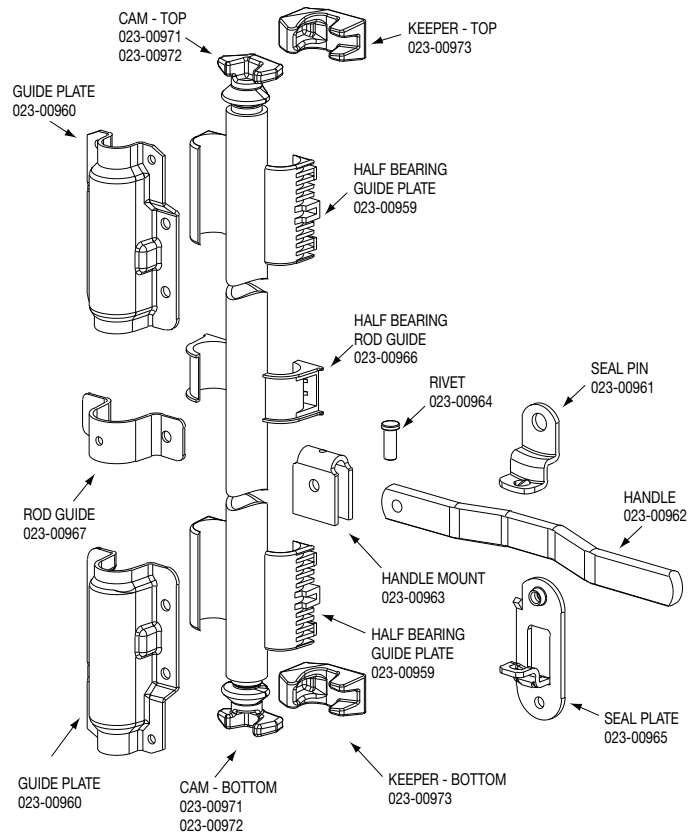
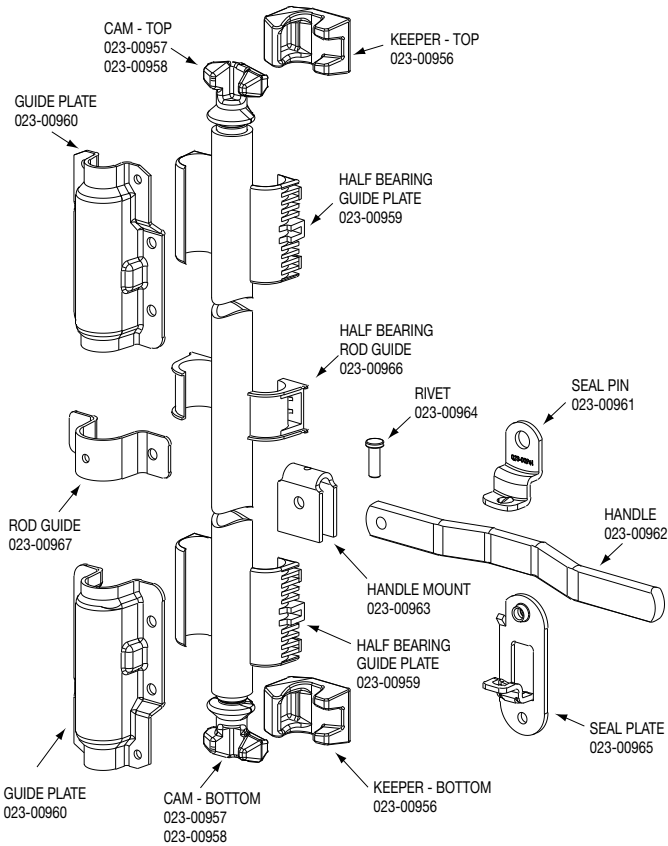
Fax: 231-777-2720

Email: [salesorders@fleetengineers.com](mailto:salesorders@fleetengineers.com)

Proudly Made in Muskegon, Michigan • USA

# LOCKRODS

Each lockrod packaged set includes, two keepers, two cams, four half bearing guide plates, two guide plates, rod guide, handle, handle mount, seal, plate, seal pin and rivet. Galvanized lock rod pipe is sold separately.



## Lockrod

part no.:	weight (lbs.)	description
021-00312	13.25	packaged set
023-00968	13.79	lock rod pipe

## Narrow Version Lockrod

part no.:	weight (lbs.)	description
021-00313	13.25	packaged set
023-00968	13.79	lock rod pipe

## Dual-Durometer Door Seals

Door seals are 168" long and light gray in color.

Part 022-01300 - .75" seal

Part 022-01301 - 1.00" seal

Part 022-01305 - .50" seal

Part 022-01303 - 1.25" seal

Part 022-01306 - 24 piece corner tab pkg. set



Corner Tab

## Door Bumpers

Rubber door bumpers help protect swing doors from getting scratched or dented.

### Great Dane Door Bumper

Part 022-01084

Cross Reference: 45064



Great Dane Style

Utility Style

### Utility Door Bumper

Part 022-01085

Cross Reference: 3-1250-25

## Trailer Dock Bumper

Part 022-01409



## Louvered Vents

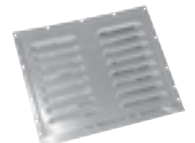
Two types available: non-adjustable to always allow air flow or adjustable to open and close as needed.

Part 024-03000 - plain, adjustable

Part 024-03005 - white enamel, adjustable

Part 024-03001 - plain, not adjustable

Part 024-03006 - white enamel, not adjustable



Adjustable, Plain Aluminum Shown

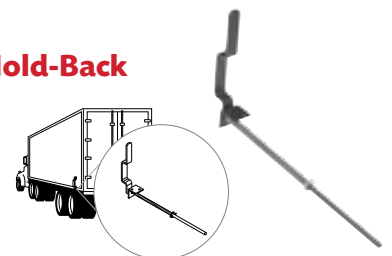
## Spring Loaded Hold-Back

Part 023-00024

Part 022-01022

Part 021-00051

Part 021-00373





## You Can Expect More

Fleet Engineers designs, manufactures and distributes comprehensive product line solutions for aerodynamics, door systems, spray control and truck and trailer parts and accessories designed to perform in the most demanding conditions. Every one of our products comes with our promise to always provide the best quality products, personalized service and competitive pricing possible.

*Look for the Fleet Engineers brand through our network of distributors, dealers and OEMs across North America, or visit us at [fleetengineers.com](http://fleetengineers.com) to learn more about how we are driving solutions to the trucking industry.*

### PRODUCT LINE SOLUTIONS



Aerodynamic Solutions



Door Systems



Spray Control



Truck & Trailer Parts & Accessories

# FLEET ENGINEERS

Driving Forward™

[FLEETENGINEERS.COM](http://FLEETENGINEERS.COM)

1800 EAST KEATING AVENUE | MUSKEGON MICHIGAN 49442 | 231-777-2537 | 800-333-7890 | FAX: 231-773-5500